



Lawton Court | Oaks Crescent | Wolverhampton | WV3 9SH

£125,000

Jackson
LILE & CLOSE

Key features



Description

A particularly attractive second floor apartment

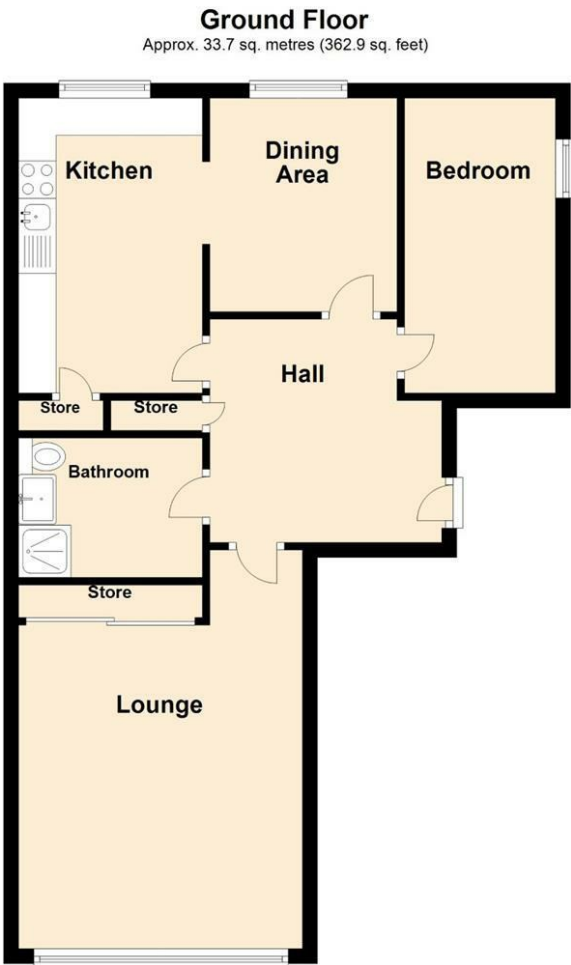


Directions

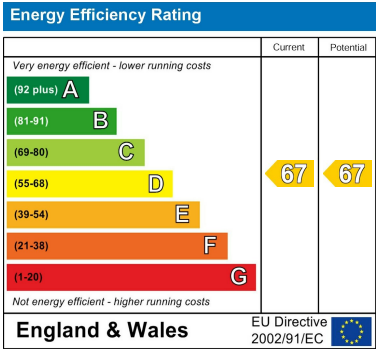




Floor plans



Total area: approx. 33.7 sq. metres (362.9 sq. feet)



12 and 13 King Street
Wolverhampton
West Midlands
WV1 1ST
01902 712812
jacksonlileclose@btconnect.com
<https://www.jacksonlileandclose.co.uk/#/>